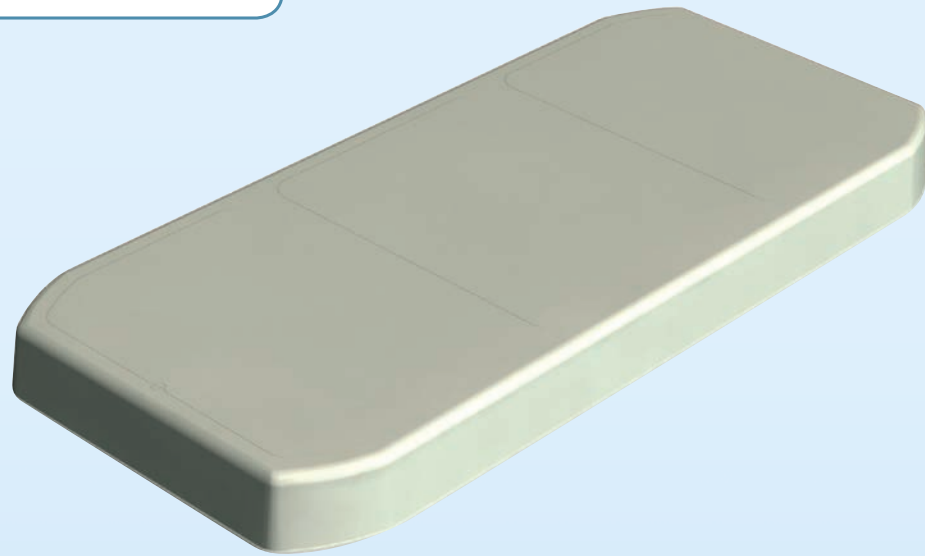
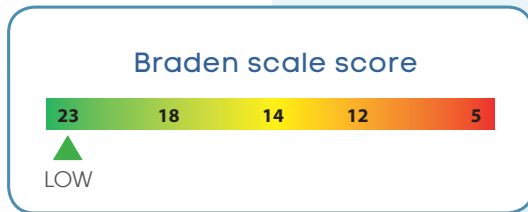


# MORFEA®



## KEY FEATURES

- ▶ High Resilient foam (HR)
- ▶ Density:  $\geq 34 \text{ Kg/m}^3$
- ▶ Hardness: 3 kPa
- ▶ Dimensions: 198 x 88 x 14 cm (77.9 x 34.6 x 5.5 inches)
- ▶ Mattress weight: 9.5 Kg
- ▶ Covers available: Promust PU and Promust PU HD

## KEY BENEFITS

- ▶ Meet the needs of persons facing a loss of autonomy, discontinuously bedridden and able to mobilize by themselves.

## INDICATIONS

HELP IN PREVENTING PRESSURE ULCERS FOR PATIENT AT NONE TO LOW RISK OF PRESSURE ULCER DEVELOPMENT.

BEDRIDDEN FEW HOURS A DAY AND ABLE TO MOBILIZING BY HIMSELF

PATIENT WEIGHT: 30 TO 120 KG/ 4.7 TO 18.8 ST

- ▶ Single-piece molded High Resilient (HR) polyurethane foam mattress with 4 cut corners
- ▶ Removable and washable integral cover

DESCRIPTION	ITEM REFERENCES ACCORDING TO PACKAGING			FIRE STANDARDS
	CARDBOX	PALLET BOX	ROLLED AND COMPRESSED (RC)	
MORFEA® Promust PU cover (not installed)	VMB14/HIP	VMB14/HIP-BOX (10 units)	VMB14RC1-HIP (1 unit) VMB14RC-HIP (5 units)	EN 597-1 and 2 GPEM D1 90 Classe C
MORFEA® Promust PU HD cover (not installed)	VMB14/HIPH	VMB14/HIPH-BOX (10 units)	—	EN 597-1 and 2 GPEM D1 90 Classe D

2 years warranty

Cleaning instructions: Promust PU (HD) cover



Photos not contractually binding

FP000031/01.2018



WINNOCARE Group - 200 rue Charles Tellier - Actiparc de Grézan - 30034 Nîmes Cedex 1 France  
Ph : +33 (0)4 66 02 15 15 - Fax : +33 (0)4 66 02 15 00 - Email : contact.askle@winnocare.fr - www.winnocare.fr  
In the interest of constantly improving its products, the WINNOCARE Group reserves the rights to modify the technical specifications of any product without prior notice  
Class I medical device in accordance with European Directive 93/42/EEC

